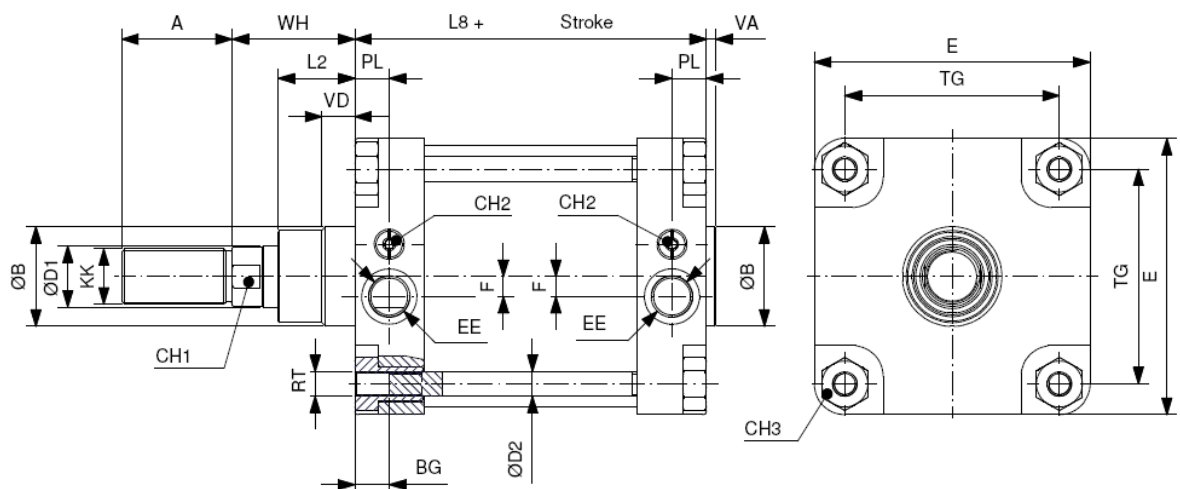


**Matara MCQP-11-160 / 200 VDMA Series .**



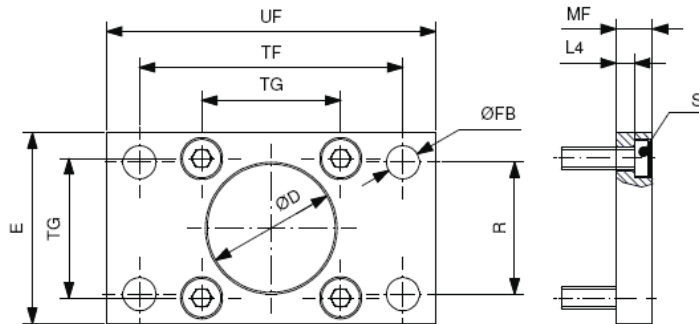
**Dimensions**



Ømm	ØD1	ØD2	KK	A	ØB	VD	VA	L2	RT	BG	TG	EE	F	PL	WH	L8	E	CH1	CH2	CH3
160	40	16	M36X2	72	65	21.5	6	50	M16X2	22.5	140	3/4"G	13	22.5	80	179.5	180	36	6	30
200	40	16	M36X2	72	75	26.5	6	55	M16X2	22.5	175	3/4"G	13	22.5	95	180	220	36	6	30

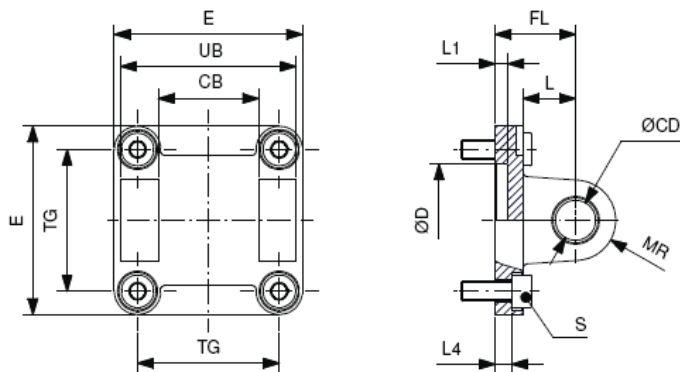
## Accessories MCQP-11-160 / 200 Cylinder

### FAC Front / Rear Flange-MCQP-160-200



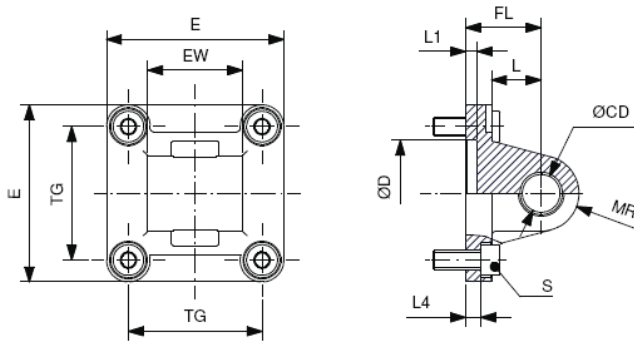
Ø mm	TG	ØD	ØFB	R	TF	L4	S	UF	E	MF
160	140	65	18	115	230	9.5	M16x30	260	180	20
200	175	75	22	135	270	12.5	M16x30	300	220	25

### CB – MCQP-160 – 200 Rear Clevis



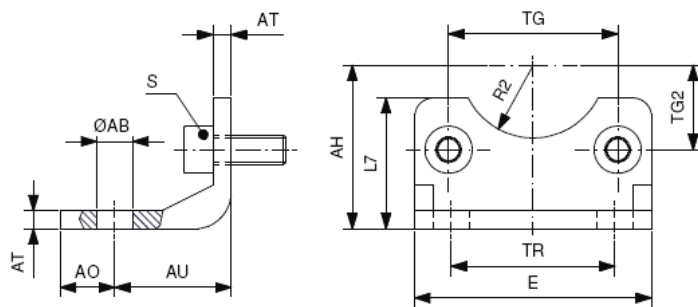
Ø mm	TG	CB	UB	ØCD	FL	L	ØD	L1	L4	S	MR	E
160	140	90	170	30	55	35	65	7	10	M16x30	25	160
200	175	90	170	30	60	35	75	7	11	M16x30	25	220

### CA – MCQP-160-200 Rear Clevis



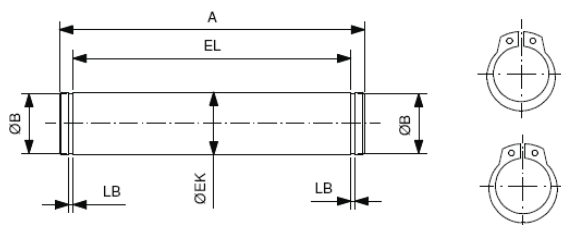
Ø mm	TG	EW	ØCD	FL	L	ØD	L1	L4	S	MR	E
160	140	90	30	55	35	65	7	10	M16x30	25	180
200	175	90	30	60	35	75	7	11	M16x30	25	220

### LB –MCQP- 160 – 200 Foot Mounting



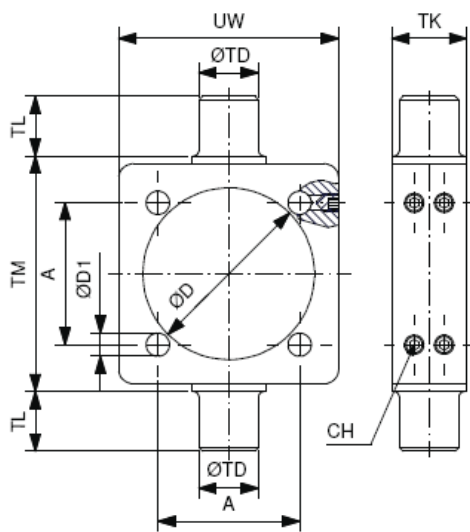
Ø mm	TG	TG2	AH	R2	ØAB	AO	AU	TR	AT	S	L7	E
160	140	70	115	32.5	18.5	15	60	115	10	M16x30	100	180
200	175	87.5	135	37.5	24	30	70	135	12	M16x30	109	220

### CA/CB MCQP-160-200 Pin



Ø mm	ØEK	EL	ØB	LB	A
160-200	30	172	28.6	1.6	180

**TC Centre Trunnion MCQP-160-200**



Ø mm	A	TM	TL	TK	ØTD	ØD	ØD1	UW
160	140	200	32	40	32	170	16.25	190
200	175	250	32	40	32	211	16.25	240

**Available With Nitrile & Viton Seals**

