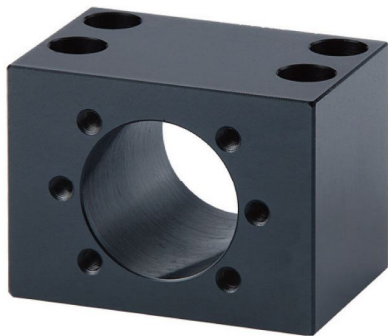
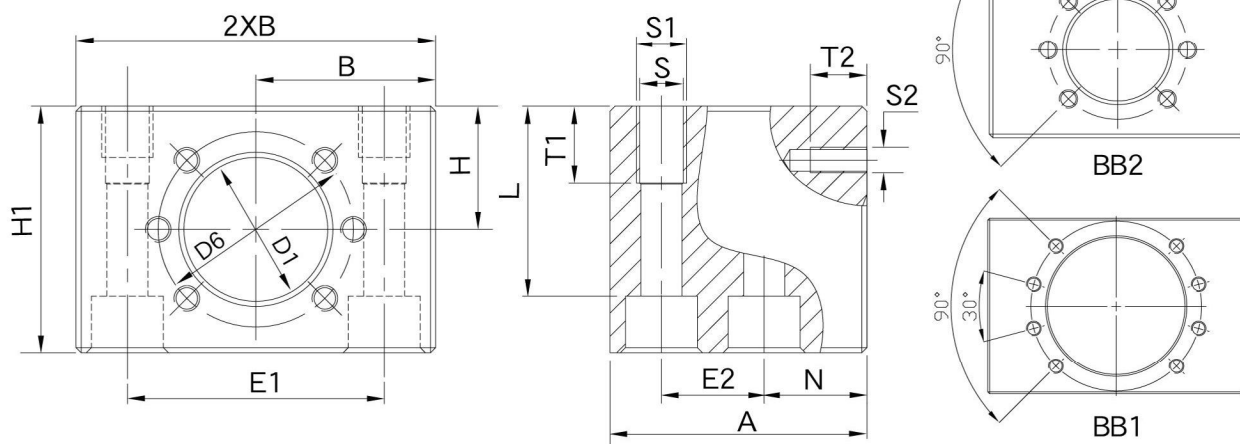


Nut Bracket MGD



MGD



Unit : mm

Model No.	Size	d ₀ ×P	Part number	D1±0.1	D6	A	B±0.1	H±0.1	H1	E1	E2	N	S	S1	T1	S2	T2	ISO4762	L	Weight (Kgs)	
MGD 16L	16×5	16×10	1506-0-0050	28.4	38	36	28	20	39	46±0.1	20±0.1	8	-	M6	12	M5	10	BB2	-	-	-
MGD 16	16×16	50				35	24	48	50±0.1			20	8.4	M10	15		M8	37	0.91		
MGD 20L	20×5	20×20	1506-1-0050	36.4	47	55	37.5	23	48	55±0.1	23±0.1	22	-	M8	14	M6	11	BB2	-	-	-
MGD 20								28	54						8.4		M10	15	M8	45	1.18
MGD 25	25×5	25×10	1506-2-0050	40.4	51	55	40	30	58	60±0.1	23±0.1	22	8.4	M10	15	M6	11	BB2	M8	49	1.33
MGD 32S	32×5	32×10	1506-3-0050	50.4	65	70	45	35	68	70±0.1	45±0.1	12.5	-	M12	20	M8	14	BB2	-	-	2.5
MGD 32	32×20	32×32					50		68										75±0.1	30±0.1	27
MGD 40	40×5	40×10	1506-4-0050	63.4	78	80	60	42	84	90±0.1	35±0.1	31	15	M18	25	M8	17	BB1	M14	66	3.61
	40×12	40×16																			
	40×20	40×40																			

Application table of MGD Nut bracket for ballscrew manufacturer.

Model No.	Ballscrew manufacturer				
	STAR	HIWIN	PMI	COMTOP	GTEN
MGD 16	1502,1512-0-****	FSI-16-05	FSIN-16-05	SFU 1605	FSU 1605
MGD 20	1502,1512-1-****	FSI-20-05	FSIN-20-05	SFU 2005	FSU 2005
MGD 25	1502,1512-2-****	FSI-25-05	FSIN-25-05	SFU 2505	FSU 2505
		FSI-25-10	FSIN-25-10	SFU 2510	FSU 2510
MGD 32	1502,1512-3-****	FSI-32-05	FSIN-32-05	SFU 3205	FSU 3205
		FSI-32-10	FSIN-32-10	SFU 3210	FSU 3210
MGD 40	1502,1512-4-****	FSI-40-05	FSIN-40-05	SFU 4005	FSU 4005
		FSI-40-10	FSIN-40-10	SFU 4010	FSU 4010