

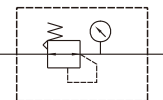
# MAR403 series

AIR UNIT (R.UNIT)



Option: MP41

### Symbol



### Specification

Model	MAR403		
Bore No.	8A	10A	15A
Port size	1/4	3/8	1/2
Medium	Air		
Max. operating pressure	1 MPa		
Proof pressure	1.5 MPa		
Regulated pressure range	0.1~0.85 MPa		
Ambient temperature	-5~+60°C (no freezing)		
Attachment	Pressure gauge (PG-20), L-type bracket		
Weight	450 g		

### Order example

MAR403 - 8A - □ - E1 - □

MODEL

BORE SIZE

8A: 1/4  
10A: 3/8  
15A: 1/2

PORT THREAD

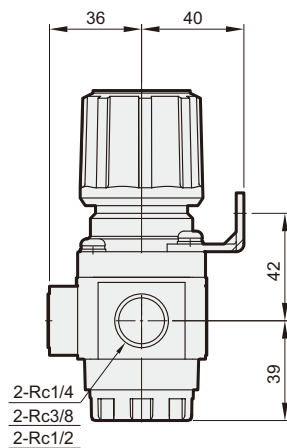
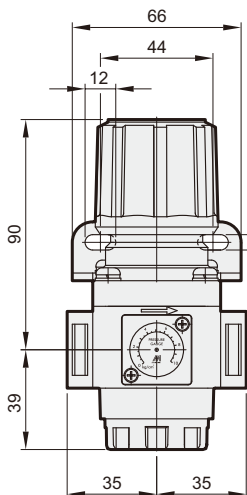
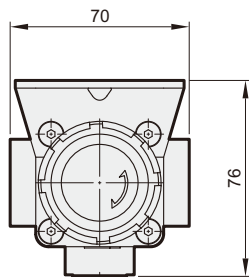
Blank: Rc thread  
G: G thread  
NPT: NPT thread

PRESSURE SWITCH

E1: MP41P-02  
E2: MP41P-02-QD  
E3: MP41P-02-J  
E4: MP41P-02-QD-J  
E5: MP41P-04  
E6: MP41P-04-QD  
E7: MP41P-04-J  
E8: MP41P-04-QD-J

※ Refer to page 6-11 for the option of digital pressure switch MP41.

Blank: Standard type  
C: External pressure gauge (PG-40)  
P: Pressure switch (MPS series)



### Flow feature

