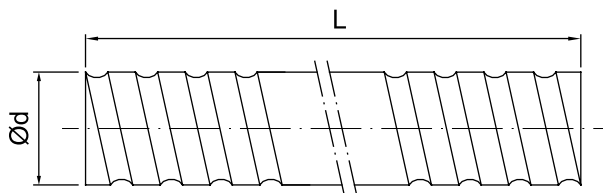


Rolled Ballscrew Specifications $\phi 6-32$



Unit: mm

Model No.			Accuracy Grade	Threading Direction	Number Of Grooves	Standard Code Of Shaft	Type Of Nut	Overall Length Of Shaft (mm)
d	L	Da		R:Right L:Left				
6	1	0.8	C7	R	1	SCR00601	K	1000
8	1	0.8	C7, C5	R	1	SCR00801	K	1000
	2	1.2	C7, C5	R	1	SCR00802	K	
	2.5	1.2	C7, C5	R	1	SCR00825	K, BSH	
10	2	1.2	C7, C5	R	1	SCR01002	K, BSH	3000
	4	2	C7, C5	R	1	SCR01004	K, BSH	
12	2	1.2	C7, C5	R	1	SCR01202	K	3000
	4	2.5	C7, C5	R	1	SCR01204	NU,BSH	
	5	2.5	C7, C5	R	1	SCR01205-A	V,NU,BSH,H	
	5	2.5	C7, C5	R	1	SCR01205-B	K	
	10	2.5	C7, C5	R	2	SCR01210-B	V	
	20	2.5	C7	R	4	SCR01220	Y	
14	2	1.2	C7, C5	R	1	SCR01402	K	1800
	4	2.5	C7	R	1	SCR01404	BSH	3000
16	4	2.381	C7, C5	R	1	SCR01604(N)	V,N I, NU, BSH	3000
	5	3.175	C7, C5	R/L	1	SCR01605	V,N I, NU, BSH	
	10	3.175	C7, C5	R	2	SCR01610	V,N I, NU, BSH	
	16	2.778	C7, C5	R	4	SCR01616	Y	
	32	2.778	C7	R	8	SCR01632	Y	
20	4	2.381	C7, C5	R	1	SCR02004(N)	V, NI, NU	3000
	5	3.175	C7, C5	R/L	1	SCR02005	V, NI, NU, BSH, H	
	20	3.175	C7, C5	R	4	SCR02020	V,Y, H	
	40	3.175	C7	R	8	SCR02040	Y	
25	4	2.381	C7	R	1	SCR02504(N)	NI, NU	6000
	5	3.175	C7, C5	R/L	1	SCR02505	V, NI, NU, BSH, H	
	10	4.762	C7, C5	R	1	SCR02510-A	NI, NU, B SH	
	10	6.35	C7, C5	R	1	SCR02510-B	V	
	25	3.969	C7, C5	R	4	SCR02525	V,Y	
	50	3.969	C7	R	8	SCR02550	Y	
32	4	2.381	C7, C5	R	1	SCR03204(N)	V, NI, NU	6000
	5	3.175	C7, C5	R/L	1	SCR03205	V,N I,N U, M,H	
	10	6.35	C7, C5	R/L	1	SCR03210	V, NI, NU	
	32	4.762	C7	R	4	SCR03232	Y	
	64	4.762	C7	R	8	SCR03264	Y	