

# MACT300L series

## AIR UNIT (F.R.L.UNIT)



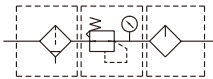
### Specification

Model	MACT300	
Components	MAF300L, MAR301, MAL300L	
Bore No.	8A	10A
Port size	1/4	3/8
Medium	Air	
Operating perssure range (*)	0.05~1 MPa	
Proof pressure	1.5 MPa	
Effective orifice	32mm <sup>2</sup>	34mm <sup>2</sup>
Regulated pressure range	0.05~0.85 MPa	
Ambient temperature	- 5~+60°C (No freezing)	
Filter element	Standard: 5μm, Option: 40μm	
Lubricating oil capacity	65c.c	
Min. flow for oil drip	50 ℓ/min	60 ℓ/min
Recommended lubricating oil	Turbine oil ISO-VG32	
Attachment	Pressure gauge(PG-40), T-type bracket	
Weight	959 g	

### Features

Longer case for adapting high efficient auto drain valve.

### Symbol



\* Standard unit contains semi-auto-drain function when operating pressure below 0.05 MPa.

\* Choose auto-drain FMRF300, the pressure range is 0.15~1 MPa.

### Order example

**MACT300L – 8A – D – □ – T8 – □**

MODEL

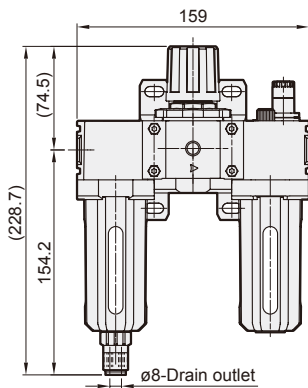
PORT SIZE  
8A: 1/4  
10A: 3/8

Blank: PC bowl + Semi-auto drain  
N: Nylon bowl  
D: Auto drain valve (FMRF300)

PORT THREAD  
Blank: Rc thread  
G: G thread  
NPT: NPT thread

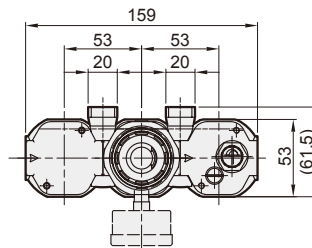
#### MACT300L-D

Auto drain valve



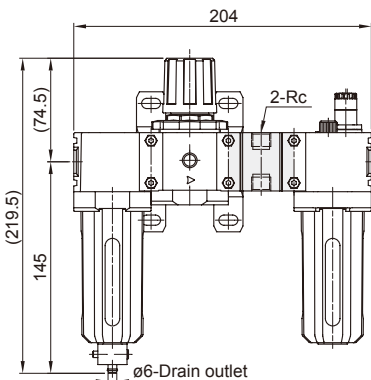
FILTER ELEMENT  
Blank: 5μm  
40u: 40μm

(Option)  
Module mounting bracket  
T8: 1/4  
T10: 3/8

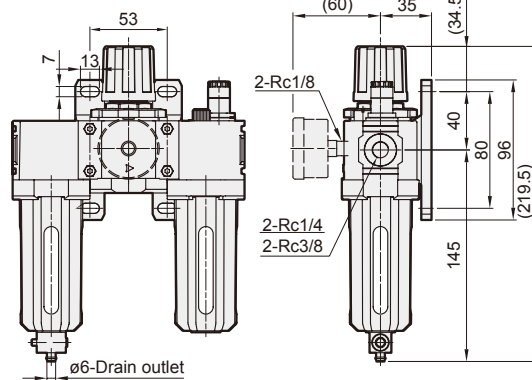
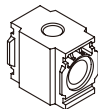


#### MACT300L-T\*

Module mounting bracket



Port Bracket	Rc
T8	Rc1/4
T10	Rc3/8



### Flow feature

