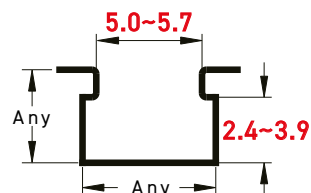
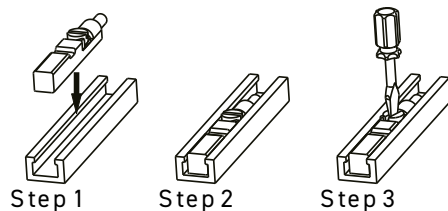


Magnetic Sensor



Characteristic	AL39-R	AL39-S
Switching Logic	SPST Normally Open	Solid State Output, Normally Open
Sensor Type	Reed Switch	NPN/PNP Automatic Detection
Operating Voltage	5~240V DC/AC	5~30V DC
Switching Current	100 mA Max.	100 mA Max.
Switching Rating	10 W Max.	3 W Max.
Current Consumption	—	7.5 mA Max. @ 24V
Voltage Drop	2.5V Max. @ 100mA DC	1 V Max. @ 200 mA DC
Leakage Current	—	0.01 mA Max.
Indicator	Red LED	Red LED
Cable	2.9 , 2C, Grey Oil Resistat PUR	2.9 , 3C, Black Oil Resistat PUR
Sensitivity	35 ~ 45 Gauss	40 ~ 800 Gauss
Switching Frequency	200 Hz	5000 Hz
Temperature range	-10 ~ 70°C	-10 ~ 70°C
Shock	30 G	50 G
Vibration	9 G	9 G
Enclosure Classification	IP 65 (EN60529)	IP 65 (EN60529)
Protection Circuit	—	Power Reverse Polarity; Surge Suppression
CE Certificate NO.	E8N 11 0 4 53334 005	—
3C Certificate NO.	No. : 2 004010305127433	—
CNEx Certificate NO.	CNEx16.2333X(ExnCIICT6GC)	—
Connect Diagram		
	<p>AL-39R-5M AL-39R-QD8 AL-39R-QD12</p>	<p>M8, M12, EZ QUICK CONNECT 2 wire QD wiring</p> <p>M83M</p> <p>OR (IEC61076-2-101)</p>