

MVHB-300 series

HAND LEVER VALVE

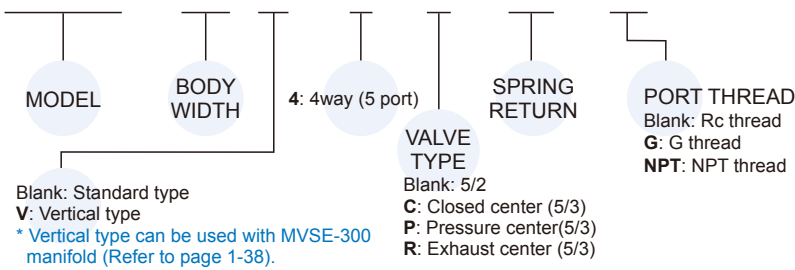


Specification

| Model | MVHB-300(V)-4TV MVHB-300(V)-4TV-SP | MVHB-300(V)-4TV* MVHB-300(V)-4TV*-SP |
|--------------------------|---------------------------------------|---|
| Bore No. | 10A | |
| Port size | Rc3/8 | |
| No. of port | 5 | |
| No. of position | 2 | 3 |
| Medium | Air | |
| Operating pressure range | 0~1.2 MPa | |
| Effective orifice | 34 mm ² | |
| Ambient temperature | -5~+60°C (No freezing) | |
| Weight | 438 g | 487 g |

Order example

MVHB – 300V – 4TVC – SP – G



MVHB-300-4TV

MVHB-300-4TV-SP

5-Rc3/8, 30, 47, 37, 46.4, 26, 52, 3-ø4.5 thru, ø18, 106.3, 60, 2-ø3.2 thru, 114, 25, 30

MVHB-300-4TVC

MVHB-300-4TVP

MVHB-300-4TVR

5-Rc3/8, 30, 52, 37, 46.4, 26, 52, 3-ø4.5 thru, ø18, 107, 110, 60, 2-ø3.2 thru, 123, 25, 30

MVHB-300-4TVC-SP

MVHB-300-4TVP-SP

MVHB-300-4TVR-SP

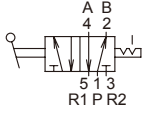
5-Rc3/8, 30, 71, 37, 46.4, 26, 52, 3-ø4.5 thru, ø18, 107, 129, 60, 2-ø3.2 thru, 142, 25, 30

MVHB-300 Dimensions

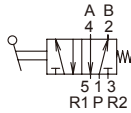
HAND LEVER VALVE



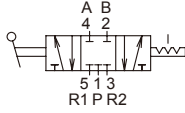
MVHB-300V-4TV



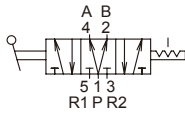
MVHB-300V-4TV-SP



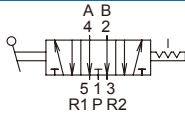
MVHB-300V-4TVC



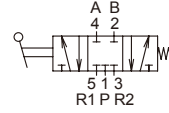
MVHB-300V-4TVP



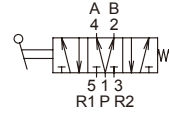
MVHB-300V-4TVR



MVHB-300V-4TVC-SP



MVHB-300V-4TVP-SP



MVHB-300V-4TVR-SP

