

Clamping Elements For Linear Guides and Shafting

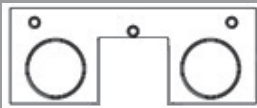

THE DYNAMICS OF MOVEMENT

CLAMPING ELEMENTS FROM MATARA:
Matara's range of linear motion clamping elements suit Linear Rail and Shafting, with both manual and pneumatic types available. The Shafting type suits diameters from as small as Ø12 all the way up to Ø60. Furthermore, the Linear Rail type suits linear rail sizes from 9 all the way up to 65.

Clamping Elements Order Example

Code: **FRC** **15** **T** **SE**

Options: 1 2 3 4

Options		Clamping Elements			
1	Series	FRC, FRCDP, FRCDPH, FRCDPM, FRCMC, FRCC, FRCMAN-M LT, FRCCMAN LT, FRCMAN LT			
2	Guide/ Shaft Size	15~65		12~60	
3	Guide Type	T Type= 		*Only for FRCDPM S Type= 	
4	Clamp Type (Only for linear rail clamps)	SE Single action configuration "Normally Open" – Air to close	SEM Single action configuration "Normally Closed" – Air to open	DE Double action configuration "Normally Open" – Air to close and to open	DEM Double action configuration "Normally Closed" – Air to open and to close

FRCDP Double Piston Element

New line created to obtain a high clamping force in small spaces.
Dual Locking Action made by a pair of pistons for each tightening part.



FRCDP SE FRCDP DE

- Dual piston system: high clamping force
- Small size
- Short reaction time

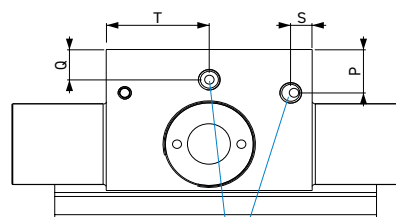
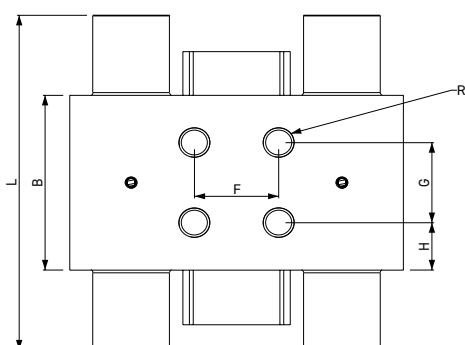
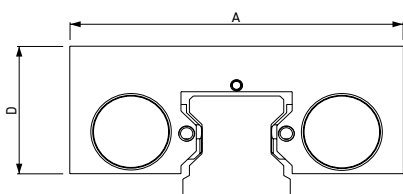
Guide size: 20 ~ 45
Guide type: T
Working type: Norm. Open
Body: Steel
Operating Temp: -20°C ~ 80°C
Operating Pressure: 5,5 ~ 8 bar



FRCDP SEM FRCDP DEM

- Locking element without the use of energy
- High clamping force thanks to a double piston system
- Small size
- Short reaction times

Guide size: 20 ~ 45
Guide type: T
Working type: Norm. Closed
Body: Steel
Operating Temp: -20°C ~ 80°C
Operating Pressure: 5,5 ~ 8 bar



**M5
AIR CONNECTION**
we recommend
the use of compressed
air hose \varnothing 6x4

Model No.	Guide Type and Size	Clamping Force (N)				A [mm]	B [mm]	D [mm]	F [mm]	G [mm]	H [mm]	L [mm]	P [mm]	Q [mm]	R	S [mm]	T [mm]
		SEM	SE	DE	DEM												
FRCDP	T 20	800	1300	1300	2100	73	51	25.5	20	27	12	89	5.5	5	M5x6	15	10
FRCDP	T 25	1200	2000	2000	3200	78	51	30.5	20	20	15.5	95	5	6.5	M6x7	30.5	5.5
FRCDP	T 30	1200	2000	2000	3200	89	48	33	22	22	13	92	6	9.5	M8x10	19.5	6
FRCDP	T 35	1500	2200	2200	3700	100	49	36.5	24	24	12.5	98	7.5	5.25	M8x15	30.5	4.5
FRCDP	T 45	2000	3000	3000	5000	120	56	43.5	26	26	15	114	13	9.5	M10x17	22	5